



[www.springlake-earth.ffaow.org](http://www.springlake-earth.ffaow.org)

President - Davey Crandall  
 Vice President - Clayton Stevenson  
 Secretary- Trace Goodman  
 Treasurer - Saylor Beerwinkle  
 Reporter - Katy Jones  
 Sentinel - Slade Beerwinkle

*Newsletter* *May, 2022*



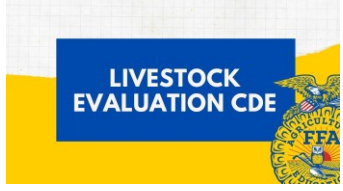
... where have you positioned yourself as we approach the finish?



It's not what happened .... It's what you do with what has happened the last 13 years.... Best of Luck as you move ahead!!!

**LIVESTOCK EVALUATION**  
 COLLEGE STATION  
 APRIL 29-30, 2022

**SPRINGLAKE EARTH FFA**



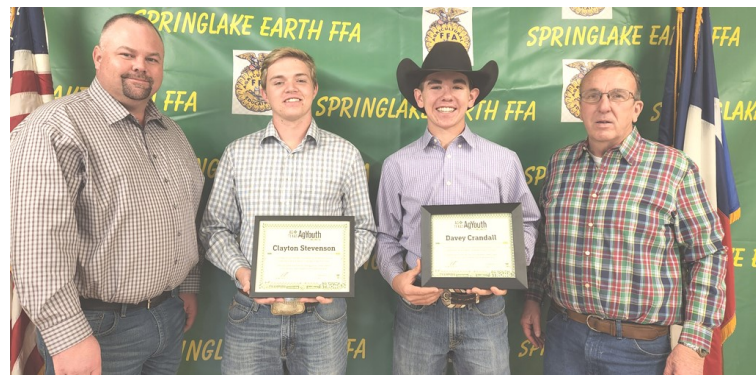




Houston Livestock Show Sponsor



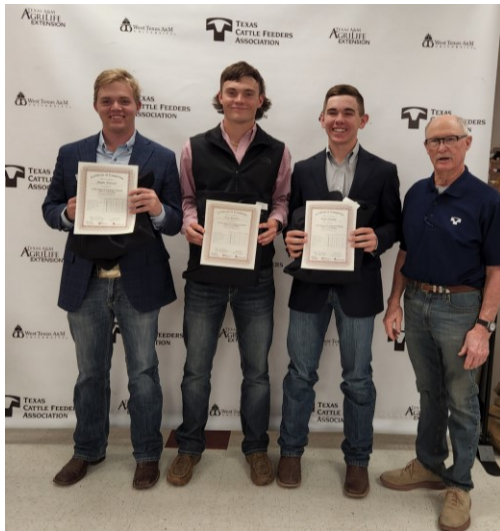
WTAMU - Canyon --- Friday, May 13 leaving at 6:30 am



The 94th Texas FFA State Convention is scheduled for July 11-15, 2022 in Fort Worth, TX. More information will be posted as it becomes available. Sign up to attend in the ag office.



June 13-16, 2022



# AG TEXAS

**FARM CREDIT SERVICES** Thanks to Ag Texas for sponsoring the Student of the Month Program and recognizing our students.



Summer and 2022-2023 schedule posted in June



**FOR ANIMALS. FOR HEALTH. FOR YOU.**



Once again we say thanks to Zoetis and the Animal Health International Folks for their annual donation to our chapter. THANK YOU!!!

**SUPERVISED AGRICULTURAL EXPERIENCE**



**SAE**



*Continue to update*

Its easier to keep books as you go than to play catchup. Reminder you can do it from your phone. [www.m.theact.com](http://www.m.theact.com)



Scholarships...Srs, ACT is a scorable part of the Texas FFA Scholarship Application. If you are planning on applying and have not taken the ACT, you are behind.

Jrs, now is the time to start working on the Texas FFA Scholarship Application and the ACT score is important. Now is the time to start taking the ACT. Don't wait.

Despite some dropping the ACT requirement for selection or admission, the Texas FFA did not. It is still required and is a scorable part of the application.



We continue to use the remind system to communicate through text messaging of things coming up and deadlines. All members AND parents are encouraged to

subscribe to this service. **Text @9b748 to 81010**





Springlake Earth AGSC/FFA

Alan Been  
Ag Science Dept  
abeen@springlake-earth.org

PO Box 130  
Earth, TX 79031  
www.springlake-earth.ffa.org

(806)257-3310 - 417 (806)638-7901

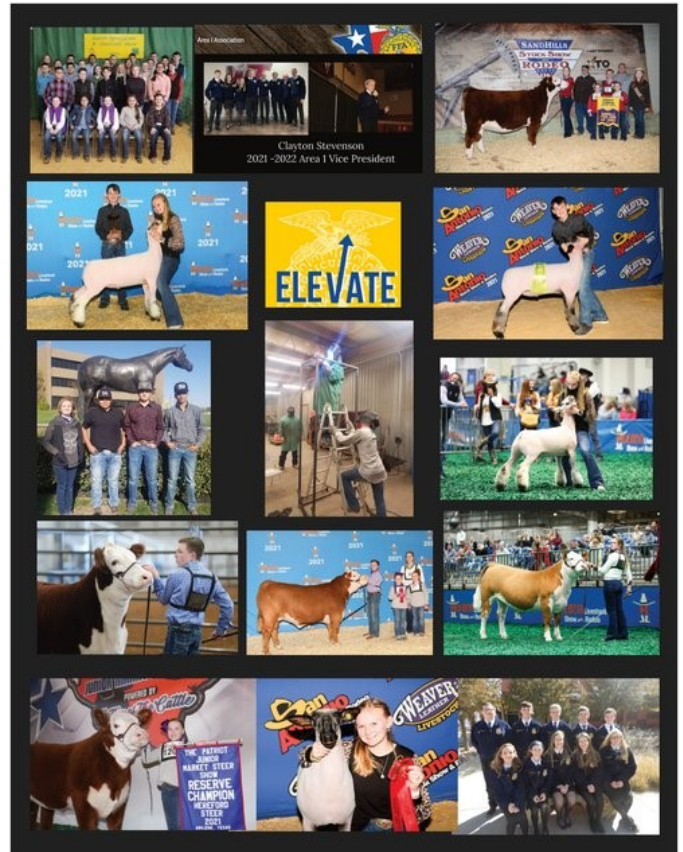


**1. All things FFA, regardless of how little or big you think it is, must go through the ag office not around it.**



community  
Service

Earth Roping Club is our primary Community Service Project. We have several projects at the Earth Rodeo Arena that you could get hours toward you Lone Star FFA Degee. Help us out this summer!



# Highlights

Already saving pictures for next year's poster. **JUST ONE** thing could land you there



*It's what you make of it... What you do today becomes who you are, where you've been, and where you are going.*

*Don't fall off now... at the 1/4 pole.*

